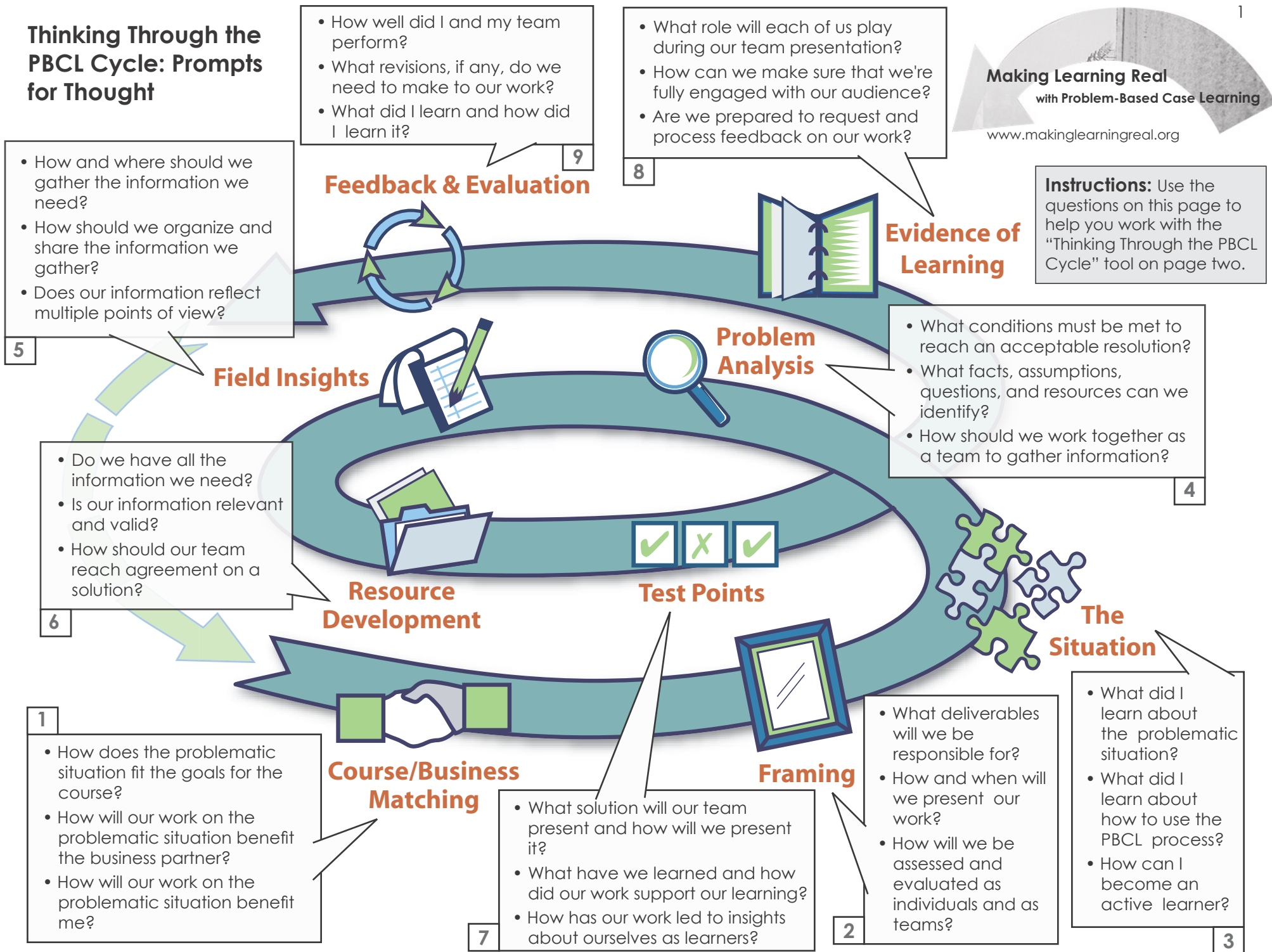


Thinking Through the PBCL Cycle: Prompts for Thought

Making Learning Real
with Problem-Based Case Learning
www.makinglearningreal.org

Instructions: Use the questions on this page to help you work with the "Thinking Through the PBCL Cycle" tool on page two.



Thinking Through the PBCL Cycle

Making Learning Real
with Problem-Based Case Learning

www.makinglearningreal.org

Instructions: This tool can guide you through the stages of the PBCL Cycle. Use the questions from page one and record your thoughts in these blank boxes for each of the PBCL Cycle stages.

